

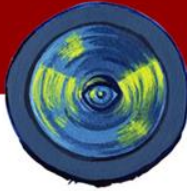
# Discrepancies between technology and legitimacy assumptions in the practice of public mobility surveillance

Charlotte van Ooijen

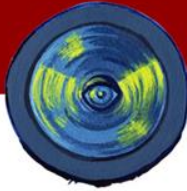
CvanO, Technology & Innovation Policy Analysis



# Public mobility surveillance



# Assumptions in policy-making concerning public mobility surveillance



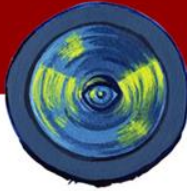
## **Technology assumptions:**

**Which possibilities does surveillance technology offer in policy?**

## **Legitimacy assumptions:**

**Under which conditions can the application of surveillance technology be considered legitimate?**

# Control, interaction and precaution



## Control perspective

- Technology: widespread control and disciplining citizens
- Legitimacy: grounds for the usage of surveillance and considerations concerning privacy



## Interaction perspective

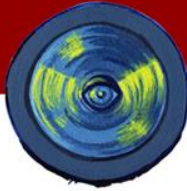
- Technology: connecting government and citizens and joint creation of information
- Legitimacy: access to and relevance and quality of surveillance information



## Precautionary perspective

- Technology: identifying and containing risks and risk citizens
- Legitimacy: defining risks and categories of risk citizens

# Two case studies



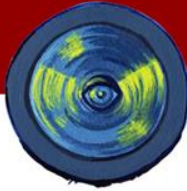
Automatic number plate recognition (ANPR)  
by a Dutch Police force.



Innovation in the collection and processing of  
traffic data by the National Data Warehouse.



# ANPR in policing



TECHNOLOGY  
ASSUMPTIONS



**CONTROL**



**PRECAUTION**

LEGITIMACY  
ASSUMPTIONS

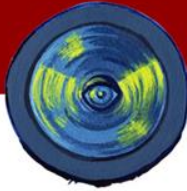


**CONTROL**



**PRECAUTION**

# Innovative technologies for traffic data



TECHNOLOGY  
ASSUMPTIONS



**PRECAUTION**

LEGITIMACY  
ASSUMPTIONS



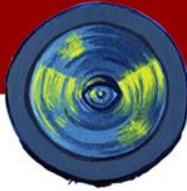
**CONTROL**



**INTERACTION**



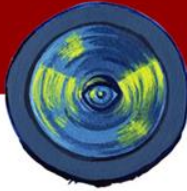
# Conclusion



- Limited connection between technology and legitimacy assumptions in practice of public administration
- The precautionary perspective is more and more dominant in the policy-making practice of public mobility surveillance.
- Evaluation in terms of legitimacy is lagging behind.

Therefore, in policy-making concerning public mobility surveillance more attention should be paid to:

- ✓ The grounds for marking someone as a risk citizen;
- ✓ The process of selection and definition of risks;
- ✓ The role of technology itself in this process;
- ✓ Clear inclusion and exclusion criteria to avoid prejudice and arbitrariness.



## Technology & Innovation Policy Analysis

Website: [www.CvanO.com](http://www.CvanO.com)  
E-mail: [charlotte@cvano.com](mailto:charlotte@cvano.com)